



# YOKA GOURMET



Taiwanese Street Food Delights

Milksha ft. Ichiryuniji 1624

Sorayoka Dining 1F Phone: 070-8574-5626 Hours: 11:00-20:00 (L.O. 19:30) \*Drinks can be taken to go

## Hearty and Huge! Taiwanese Jumbo Sticky Rice Dumpling

As soon as you unwrap the bamboo leaf, a warm soy sauce aroma fills the air. The Taiwanese Jumbo Sticky Rice Dumpling (¥550) is packed with tender braised pork, dried shrimp, shiitake mushrooms, and peanuts—all tucked into sticky glutinous rice for a rich, satisfying bite. Softer and chewier than traditional Japanese okowa (sticky rice), it offers a comforting texture you'll love. We recommend the combo (from ¥790), which includes the dumpling, a side of spicy Taiwanese-style cucumber, and your choice of tea.

Craving the flavors of a Taiwanese night market? Come and give it a try!



▲ Made with a rich soy sauce base, this dish is packed with flavor and enjoyed by all ages.

We're a collaboration between Milksha, Taiwan's popular drink stand, and the Taiwanese noodle bar Ichiryuniji. Come by and give us a try!



▲ Staff member Li Yupeng.

▲ The Taiwanese Jumbo Rice Dumpling Set (¥1,020) includes a Royal Earl Grey latte topped with handmade tapioca. The perfect mix of sweet and savory—sure to leave you fully satisfied.

\*Please note that the menu is subject to change.

### information

## Yamato Transport Delivery Counter Now Open in the Boarding Area!

Yamato Transport has opened a new delivery counter located inside the domestic boarding area, just beyond the security checkpoint. If your carry-on luggage exceeds the size limit or you need to send a gift quickly, you can conveniently ship your items directly from this counter.

Yamato Transport now has two counters at the airport: the original one on the first floor of the passenger terminal (public area, open 8:00 to 18:00) and the newly opened counter inside the domestic boarding area. From August 8 to 18, 2025, a special promotion will be running: spend ¥7,000 or more (tax included, same-day purchases can be combined) at airport shops and receive free shipping for one package. For full details, please check with staff at either counter.

Yamato Transport Delivery Counter – Inside the Boarding Area, 3rd Floor, Passenger Terminal  
Hours: 10:00-19:00



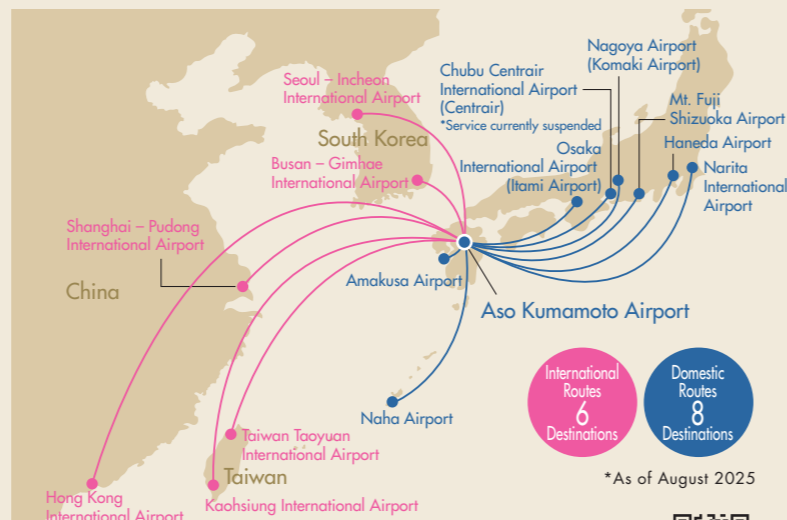
- Approx. 60 mins by car from JR Kumamoto Station
- Approx. 15 mins by car from Kyushu Expressway Mashiki-Kumamoto Airport I.C.
- Approx. 50 mins by airport limousine bus from Sakura Machi Kumamoto

Please use public transportation, including the airport limousine service, as airport parking will be limited during the weekends.

Find out more about accessibility, e.g. ▶



## Aso Kumamoto Airport Flight Routes



\*As of August 2025

そらよか

August 2025 [Vol.6]

Published by Kyushu Kumamoto International Airport Co., Ltd., 1802-2, Oyatsu, Mashiki-machi, Mashiki-gun, Kumamoto Prefecture

KKIAC vision: The world's most welcoming airport, bringing smiles to both visitors and employees.



Aso Kumamoto Airport  
official Instagram

QR Code is a registered trademark of DENSO WAVE INCORPORATED

vol.6

Aso Kumamoto Airport News Letter

orayoka

そらよか

2025.8  
SUMMER

English



简体中文



繁體中文



한국어



## Dash Down the Runway The 3rd Kumamoto Airport Marathon

Watch Planes Take Off and Land!  
Hop Aboard the "Sorayoka Tour"!

YOKA GOURMET  
Milksha ft. Ichiryuniji 1624

Information



Sorayoka is the public relations magazine of Aso Kumamoto Airport in Mashiki, Kumamoto Prefecture. The moniker is a coined term that combines "sora," meaning sky, and "yoka," which means good in the Kumamoto dialect; the phrase also means "that's good!".

# The 3rd Kumamoto Airport Marathon

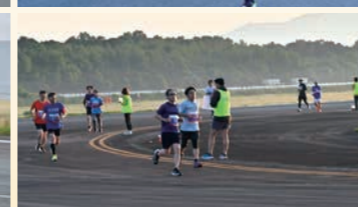
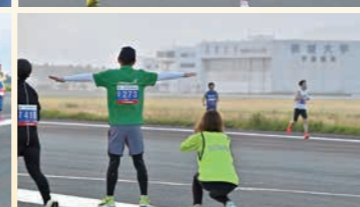
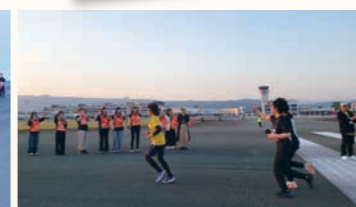
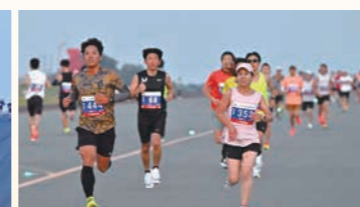
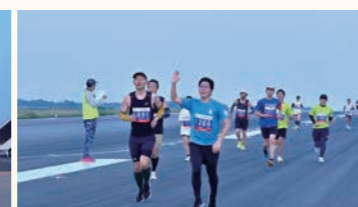


## Dash Down the Runway

The Kumamoto Airport Marathon, hosted by the Kumamoto Airport Marathon Executive Committee and proudly sponsored by Izumi Shatai Co., Ltd., was held on May 31. Around 700 runners from both within and outside the prefecture took to the runway in the early morning hours.

Now in its third year as a signature event at the airport, this year's marathon was blessed with perfect weather and clear skies. The race began at 4:50, with runners setting off together to enjoy the unique experience of running on a normally off-limits runway, all while taking in the stunning sunrise over the outer rim of the Aso mountains.

After the race, runners were treated to a hearty curry, and a raffle sponsored by airlines—featuring flight ticket giveaways—was a crowd favorite.



## Explore Aso Kumamoto Airport on the Sorayoka Tour!



### point 1

Hop on the bus and let's go!



### point 2

Take in the view of ground operations from your seat as the guide shares fun facts about the airport!



### point 3

Hop off the bus and feel the thrill of planes taking off and landing right before your eyes!



### point 4

If you're lucky, the pilot might give you a wave!

## Sorayoka Tour

- Booking and payment must be completed online in advance.
- Admission: ¥3,500 for adults / ¥2,500 for children (ages 4 to primary school), tax included.
- One infant (ages 0-3) can join for free per accompanying adult.
- An adult must accompany children.

Organized and operated by: Kyushu Sanko Bus  
Co-organized by: Kumamoto International Airport, Kyushu Sangyo Kotsu Holdings

Tour dates and times are listed on the dedicated website.

